

**Texas Tech
University System
Board of Regents**



**Texas Higher Education
Coordinating Board**

Raymund A. Paredes, Ph.D.
Commissioner of Higher Education

60x30TX: Texas Bold, Texas Achievable



60x30
Educated Population



Completion



**Marketable
Skills**



**Student
Debt**

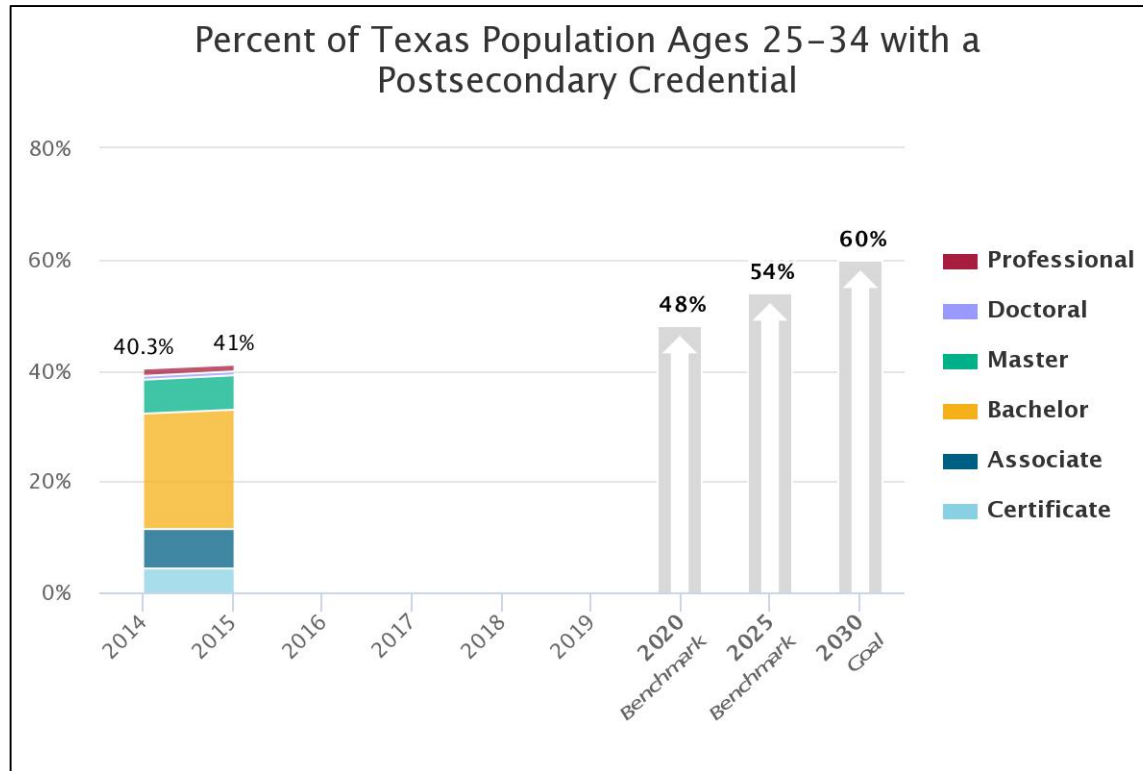


60x30 Educated Population

By 2030, at least **60 percent** of Texans ages 25-34 will have a postsecondary credential or degree.

Achieving the 60x30 goal is critical for Texas to remain globally competitive and for its people and communities to prosper.

Texas is making progress toward the 60x30 Educated Population goal



- Texas will need to increase the percent of the population with a postsecondary credential by 1.3 percentage points a year to reach 60% by 2030.

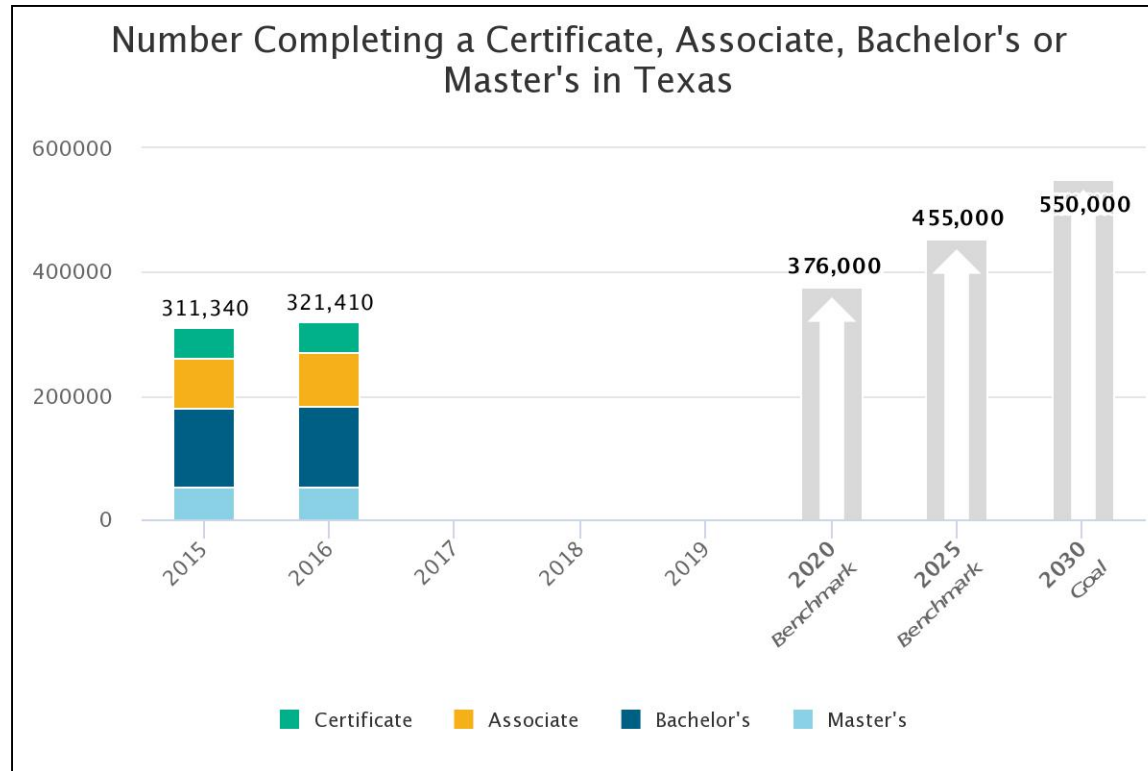


COMPLETION

Goal: By 2030, at least **550,000** students in that year will complete a certificate, associate, bachelor's, or master's from an institution of higher education in Texas.

If reached, Texas will award a total of **6.4 million** certificates or degrees during the 15 years of this plan.

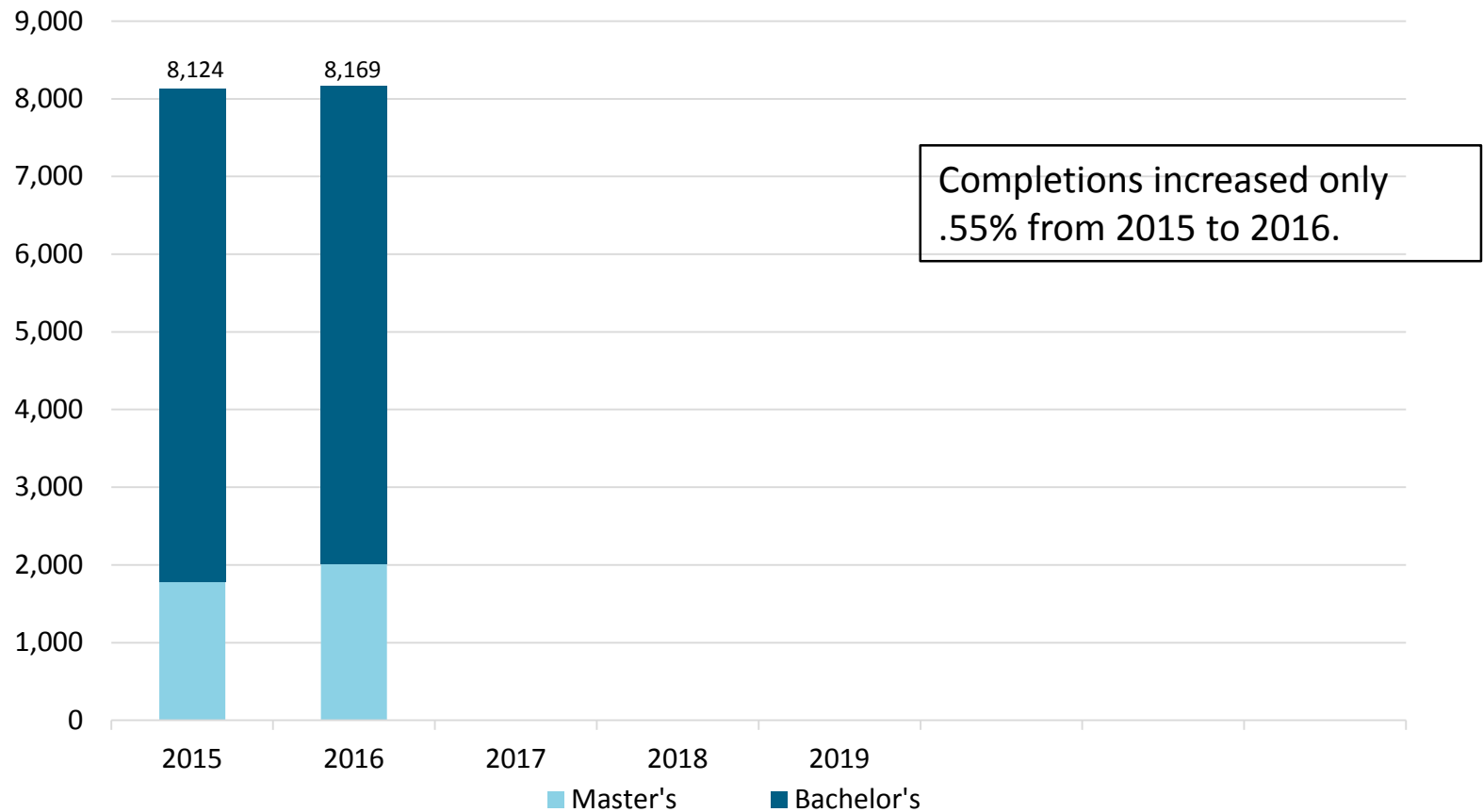
Completions are growing, but Texas needs to accelerate pace



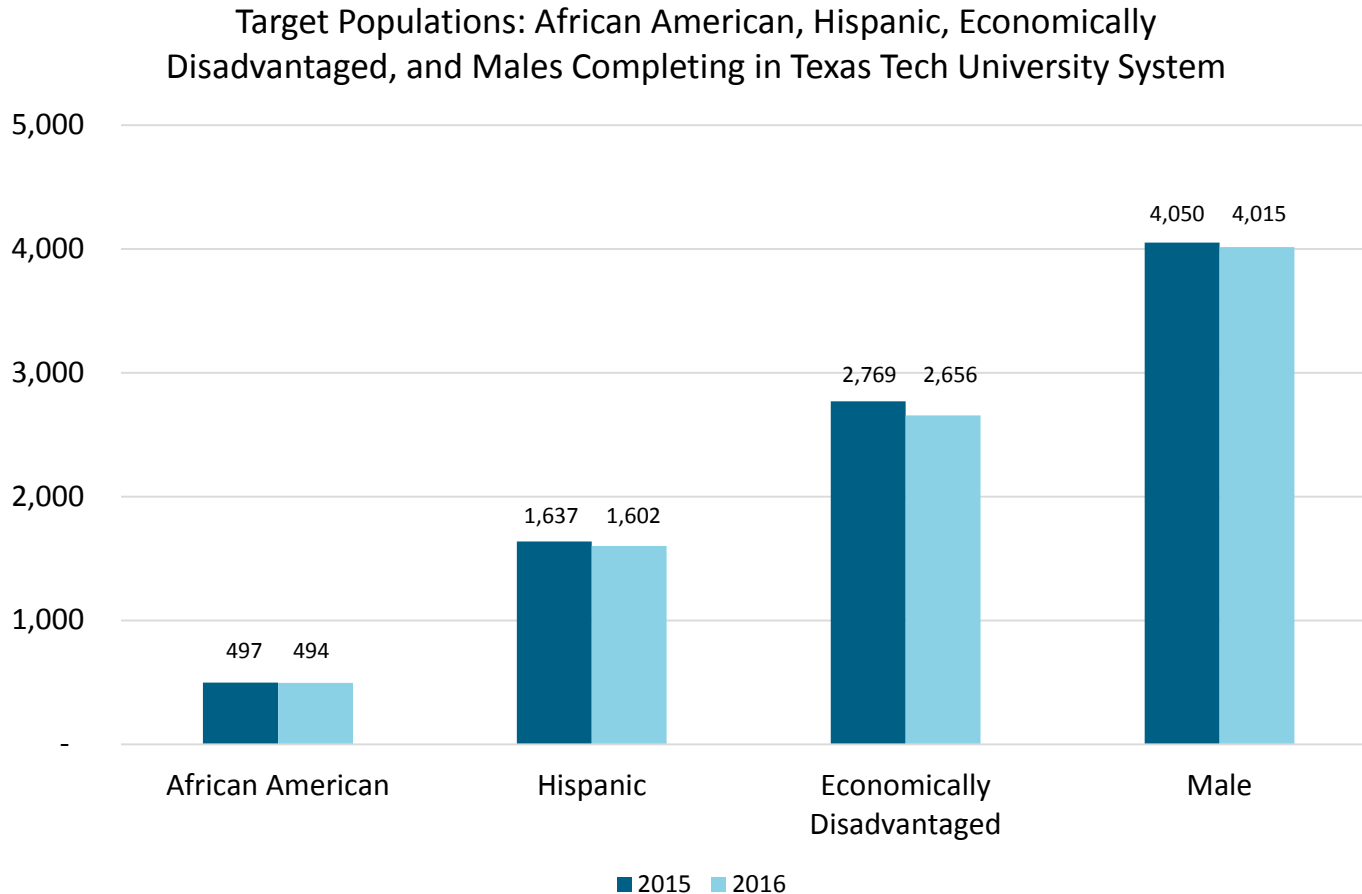
- Associate degree completions had the greatest increases between 2015 and 2016.

Texas Tech System overall completions are slightly increasing

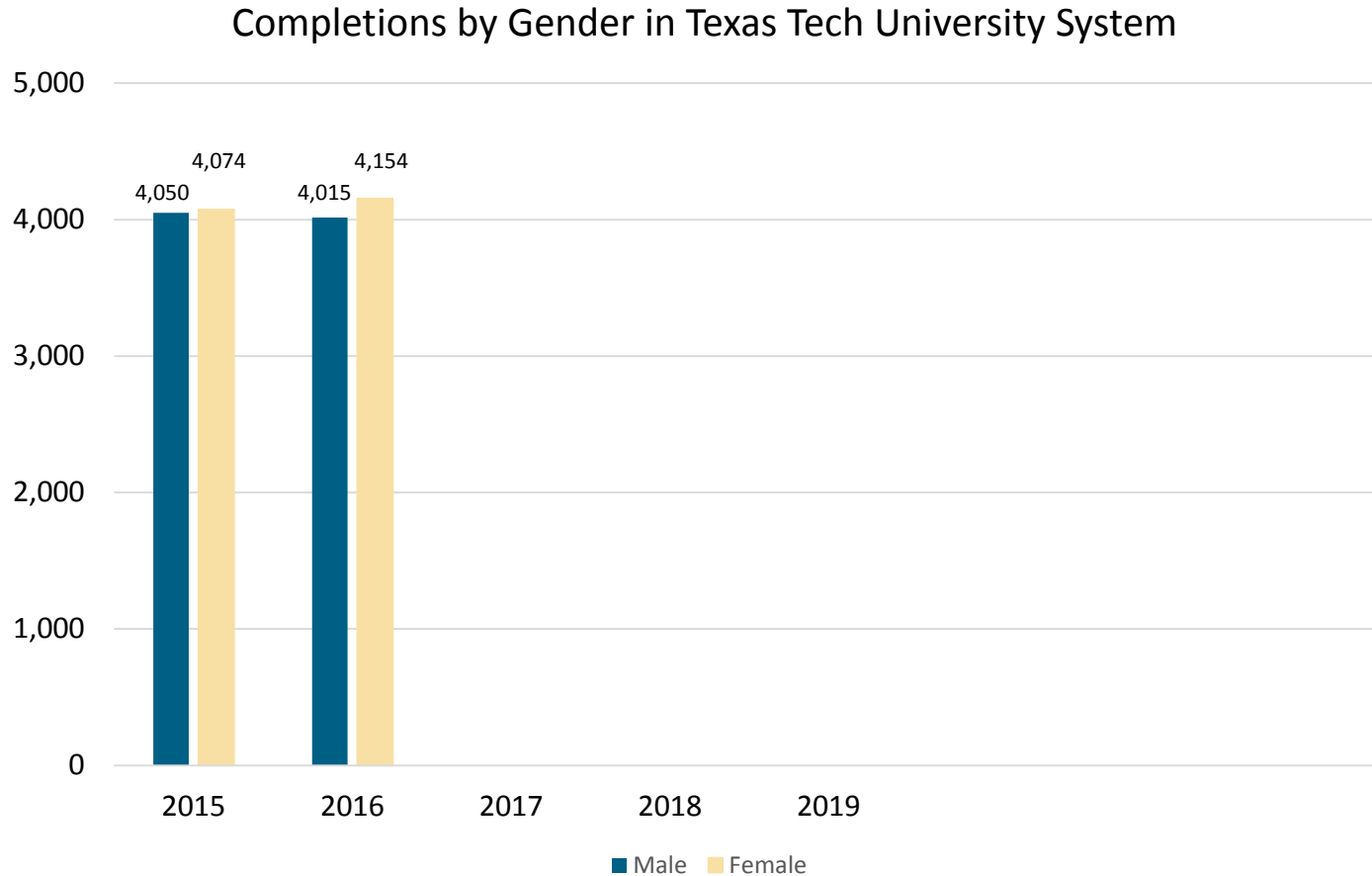
Number Completing a Certificate, Associate, Bachelor's or Master's in Texas Tech University System



Texas Tech System target population completions



Texas Tech System completions by gender

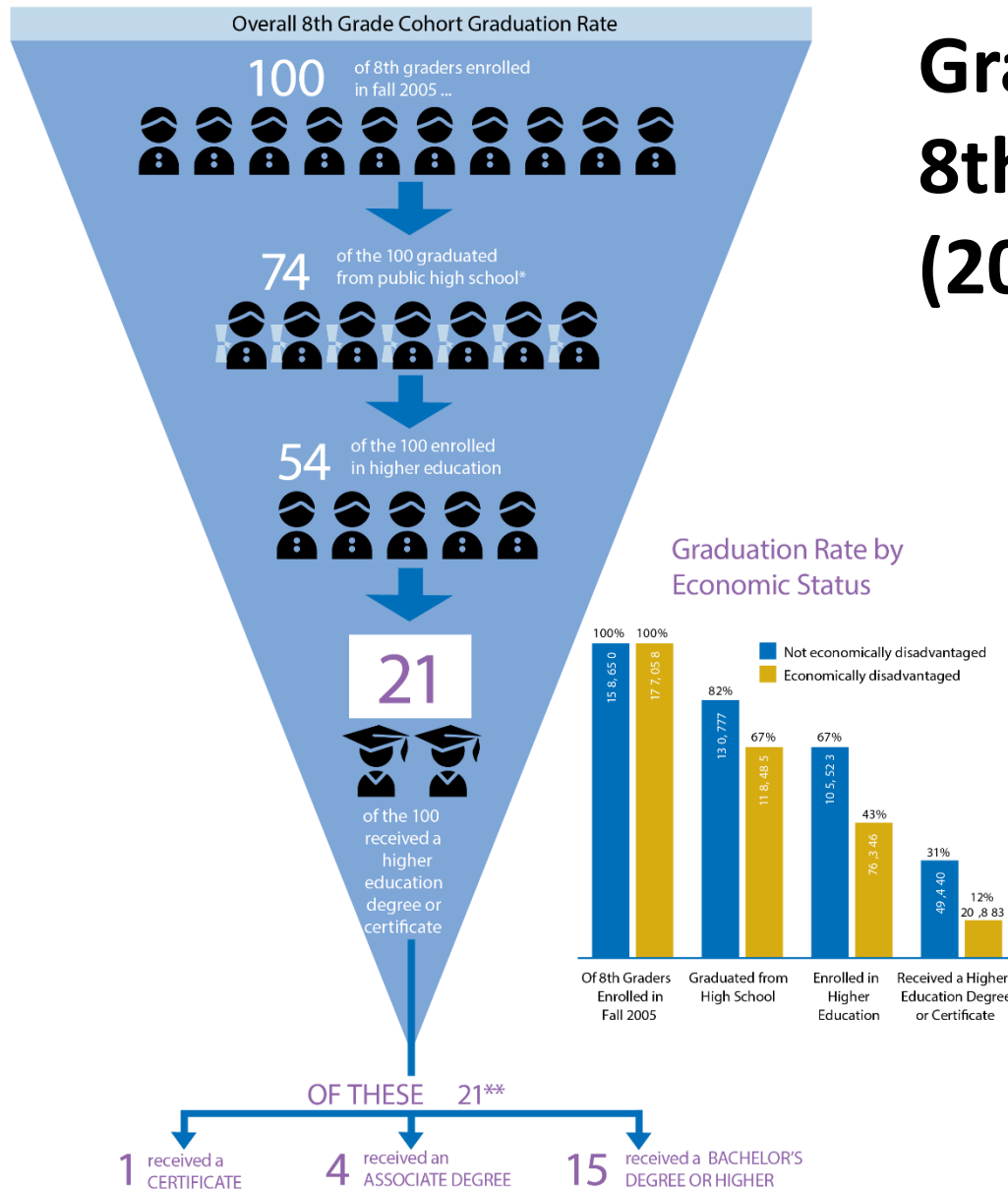


Graduation Rates for Economically Disadvantaged Students Still Lag Behind

6-Year Graduation Rates by Economic Status
Fall 2010-FY2016

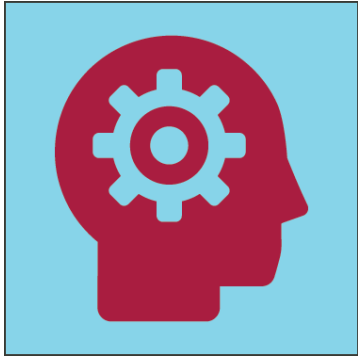
Institution	Fall 2010 Cohort	Received Pell				Did Not Receive Pell			
		Pell	% of Cohort	Grad	% of Pell	No Pell	% of Cohort	Grad	% of No Pell
ANGELO STATE UNIVERSITY	1,306	638	48.9%	223	35.0%	668	51.1%	358	53.6%
TEXAS TECH UNIVERSITY	4,730	1,212	25.6%	749	61.8%	3,518	74.4%	2,558	72.7%
STATEWIDE	66,567	28,397	42.7%	13,762	48.5%	38,170	57.3%	25,711	67.4%

Graduation rate of 8th grade cohort (2005-2016)



Source: 2017 Texas Higher Education Almanac

**Highest degree earned. Rounding may affect sum totals. The percentage receiving a certificate is 1.4%, an associate degree is 4.3%, and a bachelor's is 15.3%, for a total of 21%.



MARKETABLE SKILLS

Goal: By 2030, all graduates from Texas public institutions of higher education will have completed programs with identified marketable skills.

What is a marketable skill?

Students exit from any degree program with a variety of skills.

Marketable skills include interpersonal, cognitive, and applied skill areas, are valued by employers, and are primary or complementary to a major.

Institutions, associations, and THECB are engaged in marketable skills activities

- **Engaging Career Services** – THECB has reached out to career service professionals.
- **Texas Council of Chief Academic Officers (TCCAO)** to convene faculty from similar disciplines to create lists of marketable skills.
- **Texas Council of Chief Student Affairs Officers (TCCSAO)** has developed a common framework of marketable skills that creates crosswalk between core objectives and in-demand skills sought by employers.
- THECB hosted Marketable Skills Conference to collect institutions' suggestions for achieving marketable skills goal.



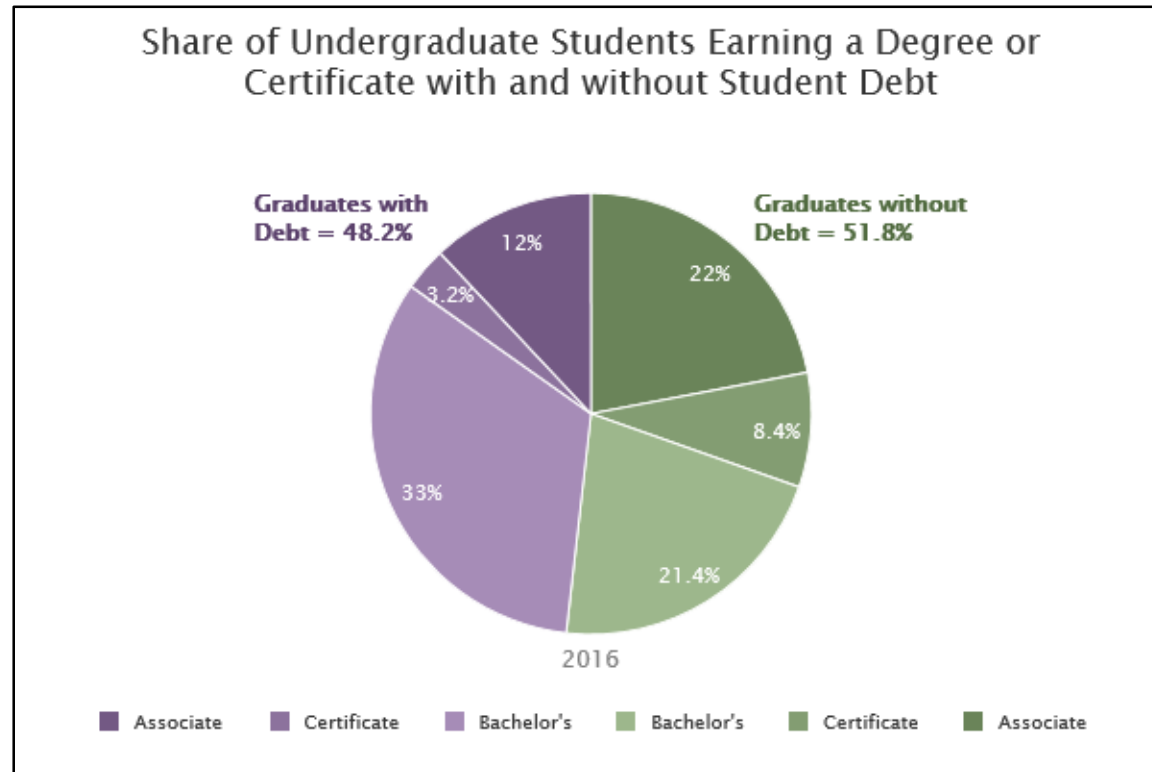
STUDENT DEBT

Goal: By 2030, undergraduate student loan debt will not exceed **60 percent** of first-year wages for graduates of Texas public institutions.

The ratio of 60% is a statewide maintenance goal.

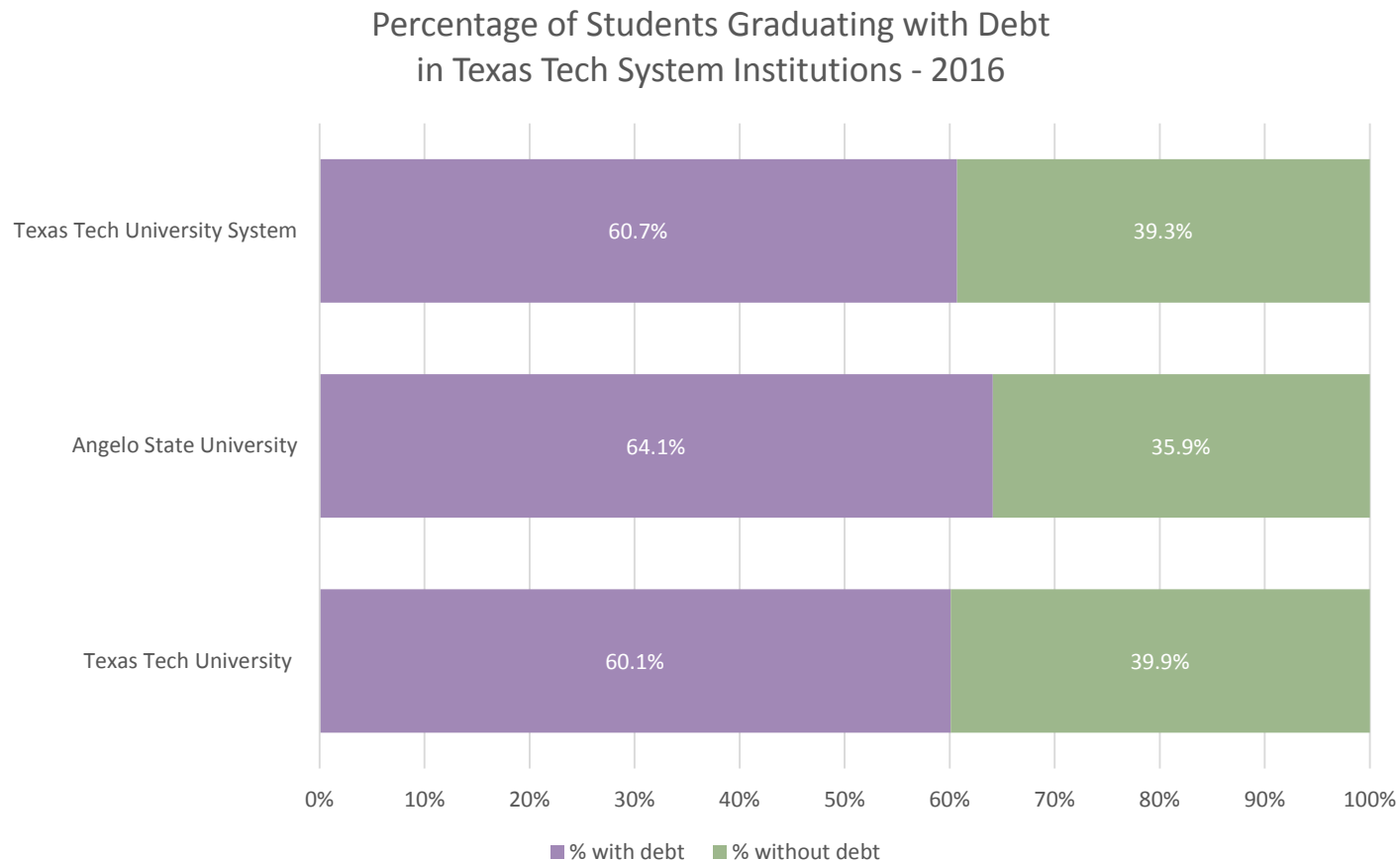
A balanced relationship among 1) the state, 2) the institutions, and 3) the students is critical to achieve this goal.

Statewide: The percent of students that graduate with any debt has decreased



- The percent of students who graduate with any debt has decreased from 49.1% in FY 2015 to 48.2% in FY 2016.

Texas Tech System has almost 61 percent of students that graduate with debt



Progress toward 60x30TX goals, targets

Goal	Target	Statewide First-Year Baseline (2015)*	Statewide 2016 Progress*	Texas Tech System (2015)*	Texas Tech 2016 Progress*
60x30	60x30 (Educated Population)	40.3%	41.0%	N/A**	N/A**
Completion	Overall	311,340	321,410	8,124	8,169
	Hispanic	96,657	103,889	1,637	1,602
	African American	38,964	38,813	497	494
	Male	131,037	135,849	4,050	4,015
	Economically Disadvantaged	114,176	119,490	2,769	2,656
	TX High School Graduates Enrolling in TX Higher Education	52.7%	51.9%	N/A**	N/A**
Marketable Skills	Working or Enrolled Within One Year	78.9%	78.8%	76.7%	74.7%
Student Debt	Student Loan Debt to First Year Wage Percentage	60%	60%	74.6%	79.8%
	Excess SCH Attempted	20	18	19	18
	Percent of Undergraduates Completing with Debt	49.2%	48.2%	61.7%	60.7%

* Baseline uses 2015 data when possible and 2016 progress uses 2016 data when possible; otherwise most recent data available are used. ** Statewide goal or target.

60x30TX progress report

- Held eight **regional meetings** to educate and engage more than 1,000 stakeholders
- Encourage **regional efforts** (60x30EP, 60x30NETX)
- Launched www.60x30TX.com that includes data by region and by institution
- Launched new accountability website, www.txhighereddata.org
- PR News Guidebook case study on 60x30TX launch published October 2017

Opportunities to achieve *60x30TX* success

- Decrease excess SCH to reduce student cost and debt (no more than three excess SCH)
- Establish Field of Study Guides for the 25 most popular majors
- Implement competency-based programs
- Develop new ideas for financial aid
 - Paid internships, work-study opportunities

Examples of TTU System academic excellence

- In 2015, the Texas Tech Agricultural Communications program was ranked as the top program in the nation.
- Since 2012, the teacher preparation programs at Texas Tech University have been revamped into clinically-rich, district-based programs. While most teacher preparation providers across the nation in both university and alternative certification settings are experiencing 30-50% drops in enrollment, Texas Tech's teacher education programs continue to grow.
- Angelo State University's nursing programs, including AA, RN to BSN, and LVN to RN transition degrees, are widely recognized for mobility options available to students.

Initiatives: Improve college-going rates

Statewide initiative

SBOE strategic planning committee (David Gardner, THECB representative)

Collaborate with K-12 in improving college and career readiness (review of standards)

Examples of ongoing TTU System programs

- Texas Tech's Red to Black financial coaching program ranked as nation's Best College Financial Literacy Program**
- ASU has been designated a Hispanic Serving Institution (HSI) by the U.S. Department of Education since 2010. Resulting federal HSI grants have totaled more than \$8 million for ASU.**

Initiatives: Focus on student success

- Increase use of predictive analytics to identify and assist students at risk of not completing(major policy discussion - April)
 - Major policy discussion – January; President Mark Becker, Georgia State University
- Develop guided pathways for meta majors
- Ensure marketable skills are integrated into programs so that students can demonstrate and communicate those skills

RAND study on graduate education

The RAND Corporation was engaged to conduct a study of graduate education in Texas – *Managing the Expansion of Graduate Education in Texas*

- Major policy discussion – July**

Graduate education serves two primary purposes:

- To prepare future instructors of undergraduate and graduate programs**
- To meet the demands of the marketplace.**

Effectively meeting the demands on graduate education will require thoughtful and deliberate action.

Implementation of higher education-related legislation – SB 1 (state budget, funding)

- **General Academic Institutions Formula Advisory Committee**
 - **Formula funding charges:**
 - Study and make recommendations for the appropriate funding level for, and for the refinement of, the graduation bonus formula. (TEC, Section 61.0593)
 - Study and make recommendations on the treatment of competency-based courses in formula allocations.

Implementation of higher education-related legislation – SB 968, 969 (sexual assault)

- SB 968 and SB 969 (85th Texas Legislature, Regular Session) require the establishment of an advisory committee with nine members, appointed by the Commissioner, with the expressed requirement of developing rules related to sexual assault policies on Texas public and private institutions of higher education. Initial sexual assault advisory committee meeting held Aug. 11 at the THECB.**
- The bills require that the Advisory Committee members be either institutional chief executive officers or their designees.**

Questions?

